

**PRESENTATION GIVEN AT THE TRANSLINKS NATURE,  
WEALTH AND POWER WORKSHOP**

**QUEZON CITY, PHILIPPINES**

**JUNE 20 – 21, 2007**

**HOSTED BY ENTERPRISEWORKS/VITA**



This workshop was made possible by the generous support of the American people through the United States Agency for International Development (USAID) under the terms of the TransLinks Cooperative Agreement No.EPP-A-00-06-00014-00 to the Wildlife Conservation Society (WCS). TransLinks is a partnership of WCS, The Earth Institute, Enterprise Works/VITA, Forest Trends and the Land Tenure Center. The contents are the responsibility of the authors and do not necessarily reflect the views of USAID or the United States government.



**C**

**B**

**F**

**M**

COMMUNITY-BASED  
FOREST  
MANAGEMENT

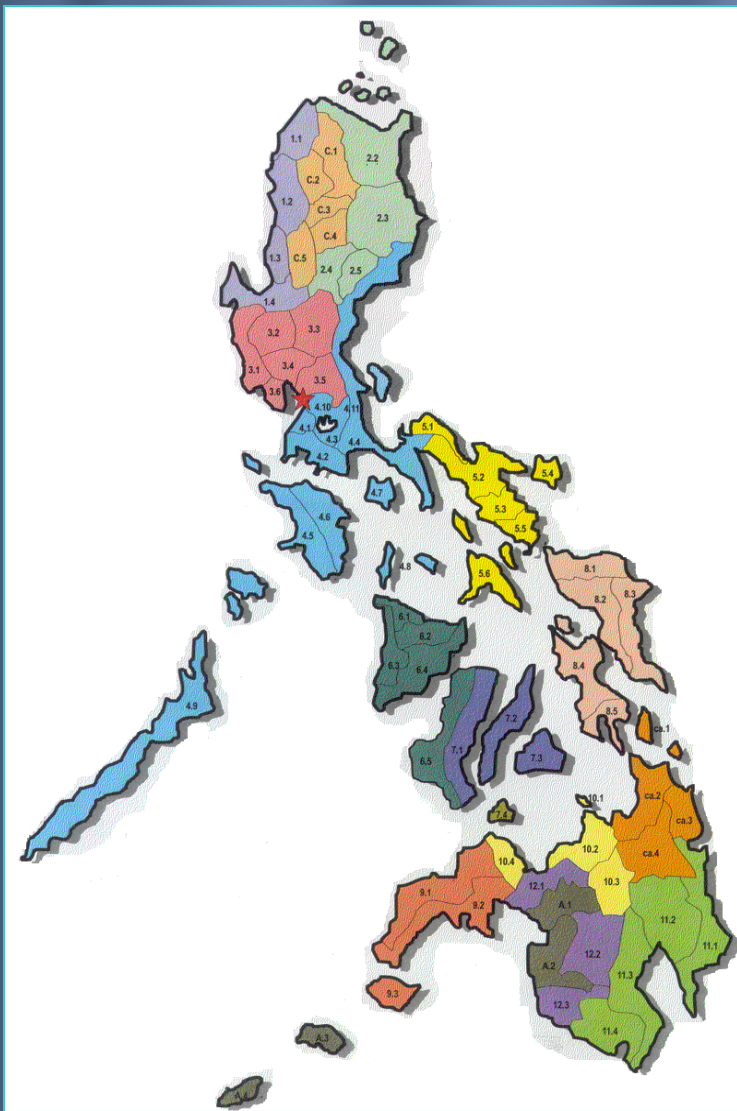
# Community-Based Forest Management

*A Primary Strategy To Promote  
Sustainable Forest Management  
in the Philippines*

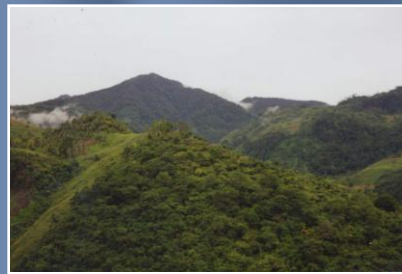
**Domingo T. Bacalla**  
Forest Management Bureau  
PHILIPPINES

# Outline of Presentation

- **Background**
  - ✓ Basic forestry statistics
  - ✓ Enabling laws
- **Adoption of CBFM Strategy**
  - ✓ Concepts, features and coverage
  - ✓ Status
- **Consultations and assessments**
- **Enhancement programs for CBFM**
- **Second decade strategies**



**The Philippines  
30 Million Hectares**



**Forestlands -  
14.76M ha. (49.20%)**



**Unclassified -  
1.09 M ha. (3.67%)**

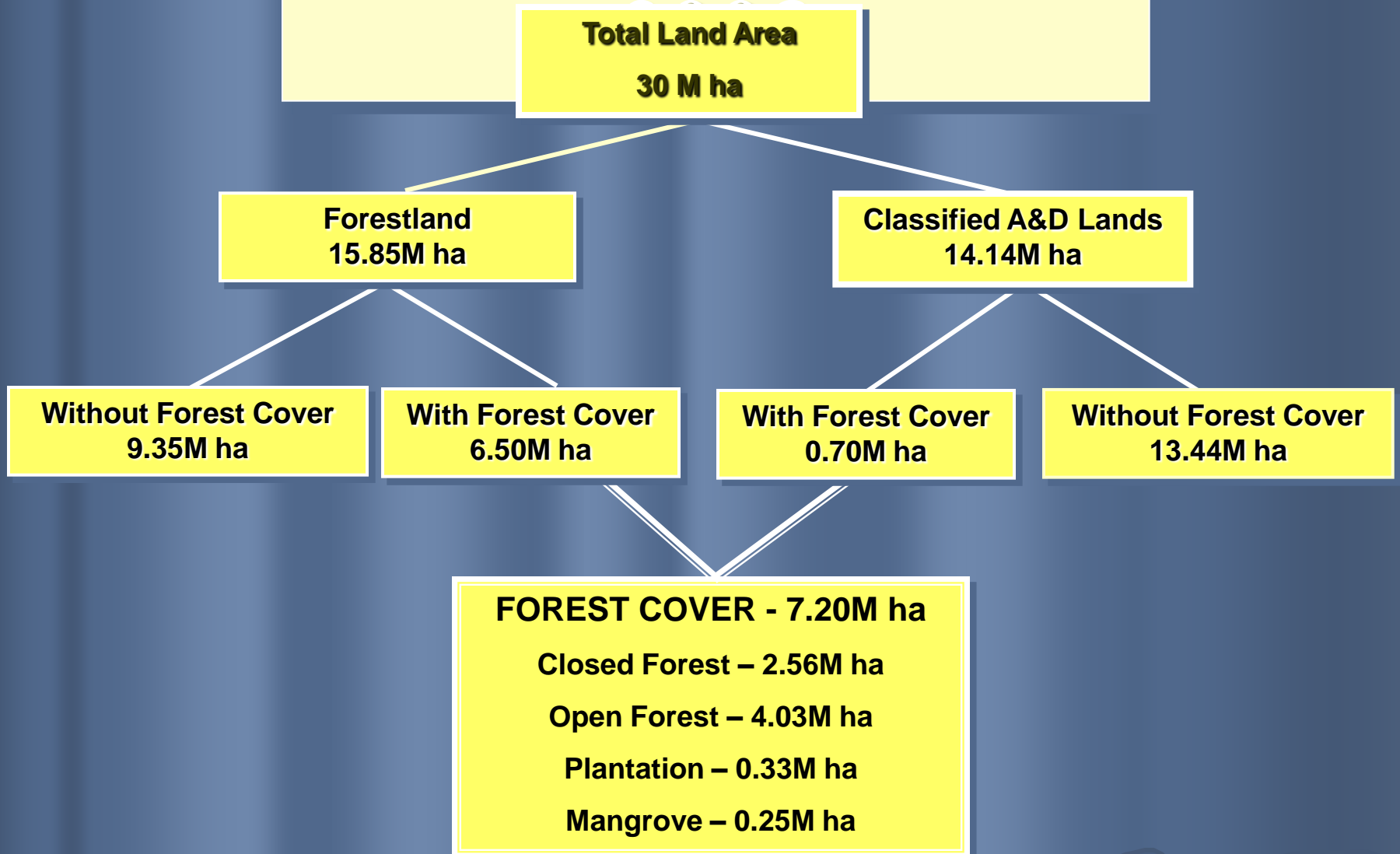


**Alienable & Disposable  
14.14 M ha. (47.13%)**



**Total Population  
86 Million**

# Phil Forest Cover



# Modes Of Disposition and Management of Forestlands

- Timber License Agreement
- Tree Farm Lease Agreement
- Agro-Forestry Farm Lease Agreement
- Integrated Forest Management Agreement
- Socialized Industrial Forest Mgt Agreement
- Forestland Grazing Management Agreement
- Special Land Use Permit/Lease
- Forest Land Use Mgt Agreement –Tourism
- **Community-Based Forest Management Agreement**

# Basic Policies



## Executive Order No. 263

- **Adopts CBFM as the national strategy to ensure sustainable development of the country's forestlands resources.**
- **Takes into account the needs and aspirations of local communities dependent on forestlands**
- **Grants organized communities access to the forestlands through long term tenure agreement**

# Basic Policies

## Executive Order No. 318 June 09, 2004

- Promotes sustainable forest management in the Philippines
- Watersheds as ecosystem management units
  - Holistic, scientific, and community-based
  - Adopts the principles of multiple-use, devolution and active participation of LGUs
  - Synergy of economic, social, environmental and cultural objectives





**F**  
**O**

**3**  
**1**  
**8**



11:20

9 9:38

# **Rules and Regulations**

**October 10, 1996 - DAO No. 96-29**

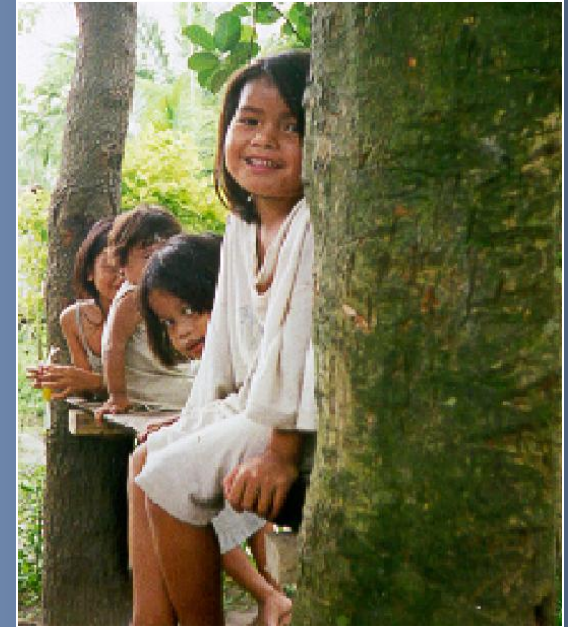
**Rules and Regulations  
for the Implementation  
of E.O. No. 263**

**August 25, 2004 - DAO No. 2004-29**

**Revised Rules and Regulations  
For the Implementation of E.O  
263, The CBFM Strategy**

# Objectives

- Promote social justice and improve well being of local communities
- Contribute to sustainable forest development



- Develop Community-LGU-DENR and other stakeholders partnership

# Scope of CBFM

- \* *All areas classified as forest lands, including allowable zones within protected areas not covered by prior vested rights.*
- \* *Integrates and unifies all POF programs ( ISFP, CFP, UDP etc.)*

# Features of CBFM



## Partnership and Collaboration

- ♣ *DENR and LGU jointly provide technical assistance*
- ♣ *Collaboration with local stakeholders*



## Security of tenure

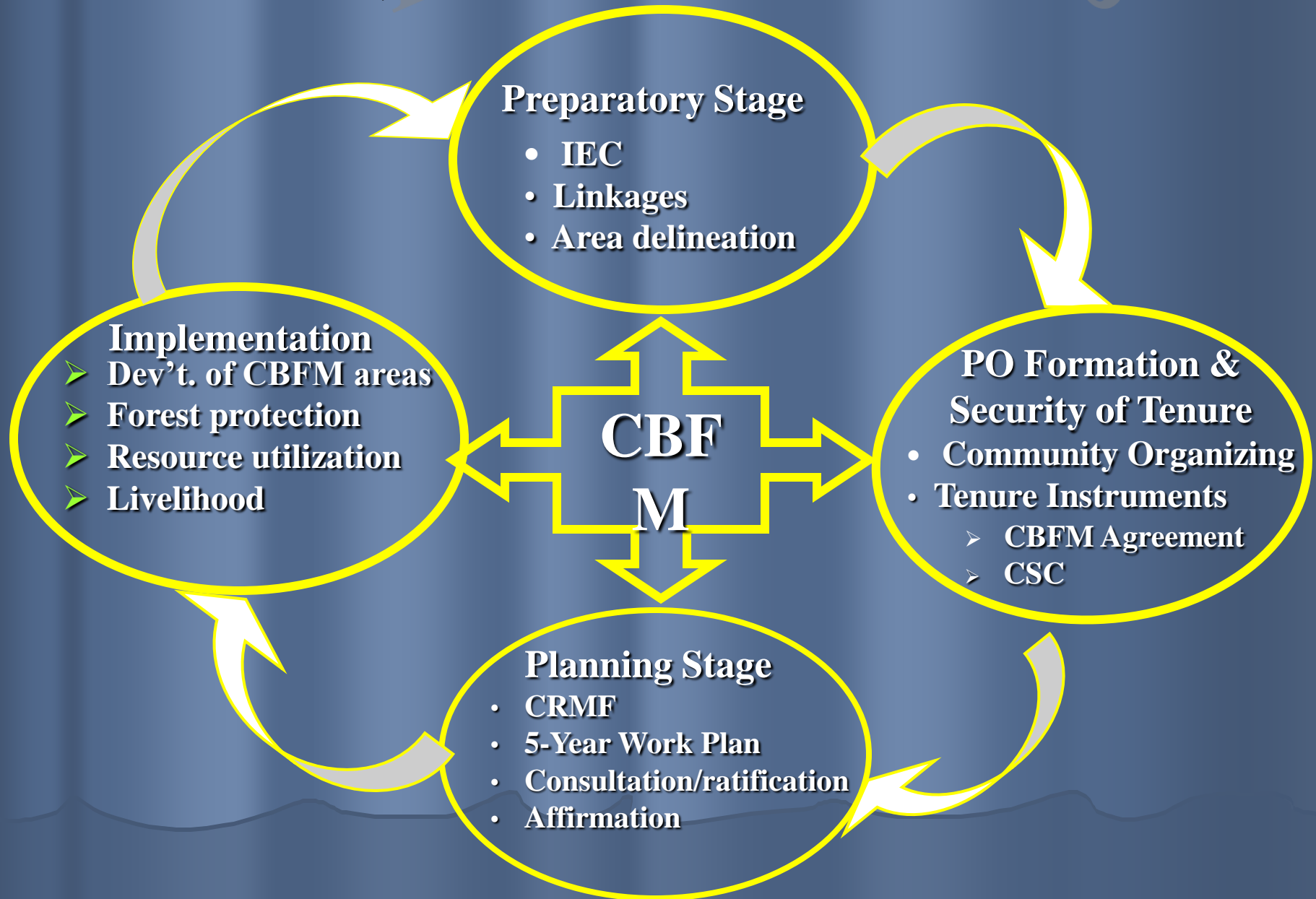
- Community-Based Forest Mgt Agreement
- Certificate of Stewardship
- Entitles local communities to develop and use forest lands
- Renewable tenure of 25 years



## Social Equity

- Guarantees equal access to forest resources and benefits

# Key Strategies



# Program Status

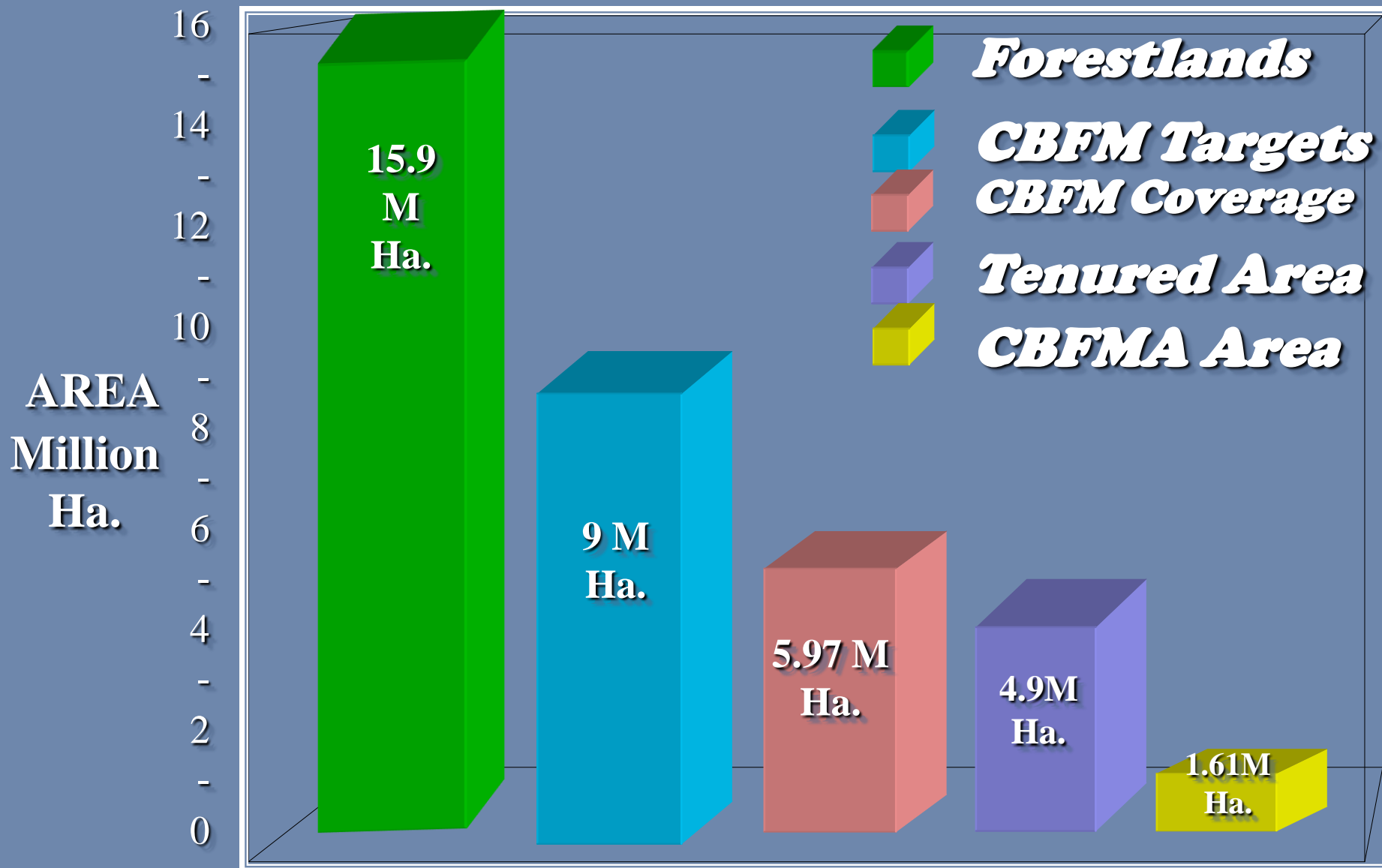


*Targets* - 9 M Ha.  
*No of Projects* - 5,503 sites  
*Project Area* - 5.97 M Ha.  
*No. of Participants* - 690,687 HH



*Issuance of CBFM Agreement*  
*No. of CBFMA* - 1,861  
*Area* - 1.61 M Ha





# *STATUS OF CBFM*

# Consultations and Assessments

---

- Series of PO consultations
- Study on CBFM regulatory procedures and requirements
- National CBFM review and assessment
- National PO Federation workshop
- In-dept studies on CBFM
- Ten-year implementation review of CBFM
- National CBFM consultative workshop

# **Major Concerns and Opportunities**

- **Strengthening the federations of the Peoples' Organizations**
- **Making government support for forest protection activities available to POs**
- **Need to strengthen DENR-LGU partnership**

# **Major Concerns and Opportunities**

- **Need for income generating projects to complement biophysical development**
- **Improving the incentive system**
- **Enhancing the capacities of DENR, LGUs and POs**
- **Institutional mechanisms**

# Enhancement of Systems and Procedures

## The CRMF

- **Jointly endorsed by the PO and CENRO for affirmation PENRO**
- **Considered affirmed if PENRO fails to act on it within 15 days unless PO is notified in writing of any deficiency**
- **Shall serve as the IEE and shall be made as basis for the issuance of the ECC**
- **First Five Years of Work and Financial Plan**

# Enhancement of Systems and Procedures



## 3. The Work Plan

- ♣ **5-Year Work Plan instead of annual WP**
- ♣ **Deemed affirmed if CENRO fails to act and notify the PO in writing of its affirmation within 30 days upon receipt of the Plan**

# Enhancement of Systems and Procedures

## Monitoring and Evaluation

- ❖ Multi-Sectoral M& E and process documentation well-emphasized
- ❖ Objectively verifiable indicators of different activities shall be identified as basis for M&E

## Program Implementation Funds

- ❖ funds needed by field offices shall be included in the CENRO, PENRO and Region's Work and Financial Plans

# Enhancement of Systems and Procedures

## Basis for CBFMA nullification

- Non-compliance with, or continued violations of the terms and conditions of the CBFMA despite the lapse of thirty (30) days
- CBFMA executed through fraudulent means and/or misrepresentation
- PO member's resolution of actual occupants/direct stakeholders by CBFMA awardee
- Serious and/or continued violations of applicable forestry laws, rules and regulations







# Enhancement Programs and Projects for CBFM

## Community Livelihood Assistance Special Program

- Provides livelihood assistance to local communities
- Supports the 10 Point Agenda
  - Poverty reduction
  - Creation of jobs
  - Development of agroforestry areas

**C  
L  
A  
S  
P**

COMMUNITY  
LIVELIHOOD  
ASSISTANCE  
SPECIAL  
PROGRAM

# Enhancement Programs and Projects for CBFM

## DOST-Small Enterprises Technology Upgrading Program



- Food processing
- Furniture
- Handicrafts, gifts and toys
- Horticultures/cut flowers
- High value crops/fruit trees
- Upgrading of technology
- Tech assistance and manpower training

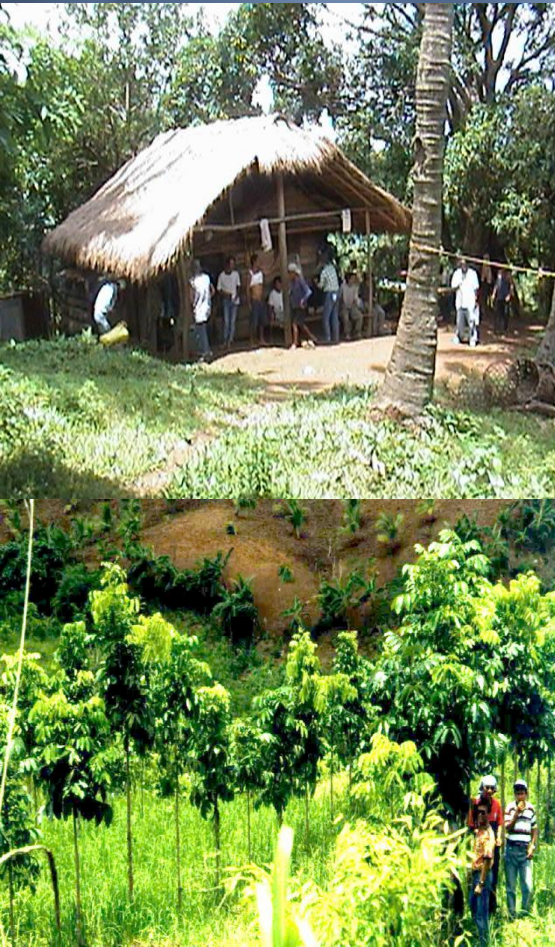
# Enhancement Programs and Projects for CBFM

## *DENR-JICA Technical Cooperation*

- *Enhancement of CBFM*
- *Building the capacities of PO in CBFM areas*
- *Strengthening DENR-LGU to Support the POs*

### *Project Components*

- **Development of Model Sites**
- **Design and Implementation of Training Programs**
- **Updating of CBFM Information System**
- **Review and Development of Policies**

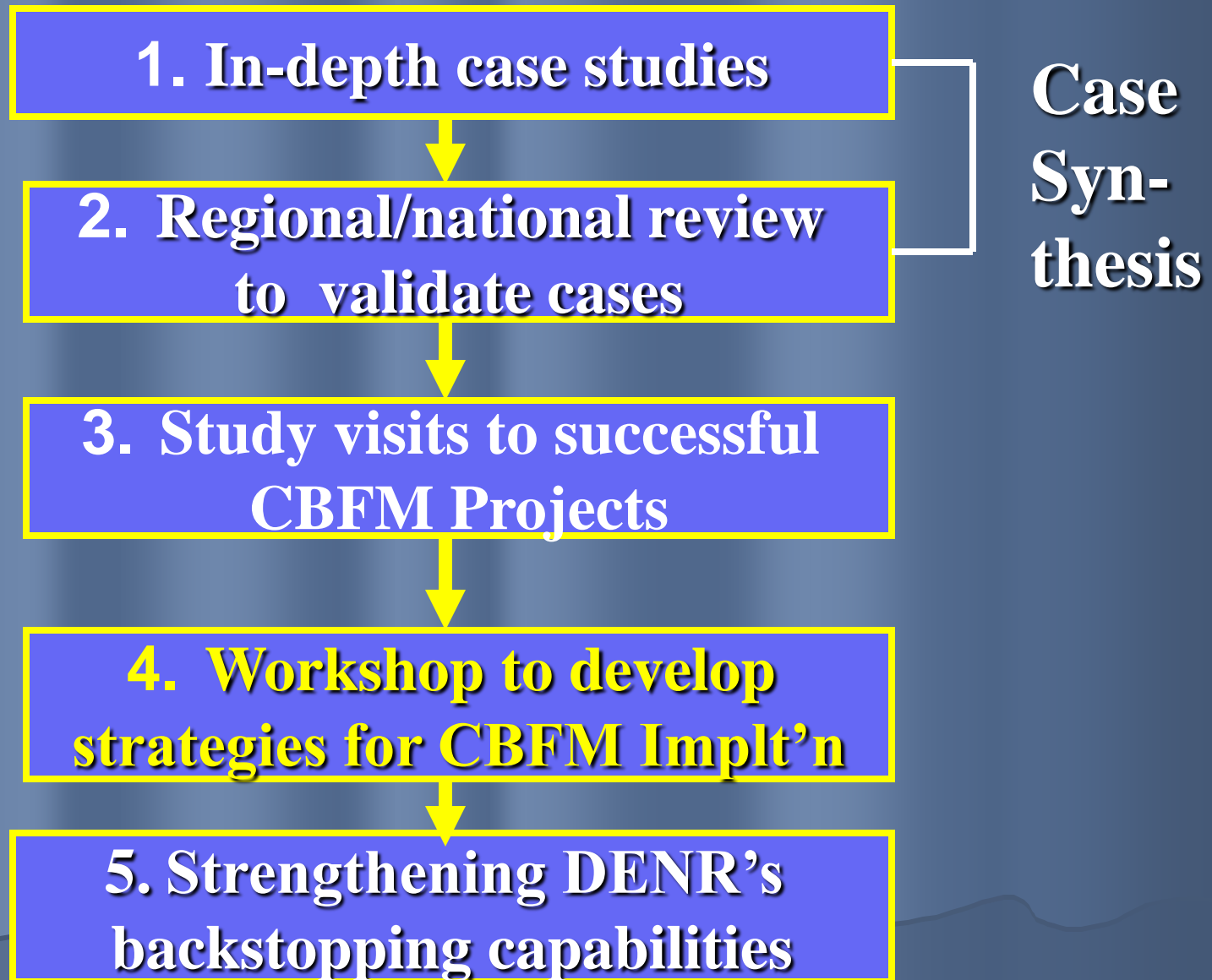


# Enhancement Programs and Projects for CBFM

## National Forestry Program Support Facility

- ♣ Provides technical and financial assistance to CBFM component of the Facility
  - Implementation of CBFM procedures at the field level
  - Delivery of services at the institutional level
  - Policy development and formulation

# Components of the NFPPF Support



# **The Second Decade CBFM Strategic Plan 2008-2017**

**Addresses issues on:**

- land tenure and resource use policy;**
- organizational strengthening of POs;**
- forest development and conservation;**
- livelihood and enterprise development; and**
- institutional and organizational support systems.**

# Vision

**“Empowered forestlands managers and support groups in sustainable and equitable management of forestlands and ancestral domains to benefit from CBFM through effective partnerships”.**

# Mission

- Peoples Organizations to assume responsibility in the management of CBFM areas in accordance with their agreements
- DENR, LGUs, NGOs and other agencies to collaborate in providing services to POs towards sustainable forest management





# Major Strategies

- **Securing tenure**
- **Empowering POs towards self governance**
- **Realizing development, Conservation, protection and sustainable utilization of forestlands and resources**
- **Developing livelihood and enterprises in Forestlands**
- **Support mechanisms**

# Securing Tenure

- **Strengthening the legal, policy and administrative framework on land tenure**
- **Granting forestlands management scheme to organized communities to place “open access” areas and those covered by expiring lease agreements identified for CBFM**

# Securing Tenure

- **Placing under tenure arrangements previously identified and integrated people-oriented projects and the issuance of CS within CBFMAs**
- **Progressive and regular assessment of CBFM tenure agreements**
- **Addressing boundary conflicts proactively**

# **Empowering POs towards self governance**

- **Encourage participation of tenure and other forest occupants/claimants**
- **Conduct a comprehensive assessment of CBFM POs**
- **Build the capacity of POs and their members**
- **Formulate/update and implement community management plans (CMP) and work plans**

# Empowering POs towards self governance

- Establish partnership and collaborative work in local governance and participate in the formulation of FLUP and other development/investment plans
- Provide venues for political engagement of CBFM tenure holders

# **Realizing development, Conservation, protection and sustainable utilization of forestlands and resources**

## **Conservation and Protection**

- Promote sustainable conservation and protection measures**
- Implement collaborative forest protection and conservation efforts**
- Work for speedy resolutions of environmental cases**
- Ensure transparency and accountability in the disposition of duties in forest protection and law enforcement**

# Realizing development, Conservation, protection and sustainable utilization of forestlands and resources

## Forest Development



- Improve system of site assessment and production of quality planting stocks
- Enhance forest cover and productivity of CBFM tenured area

# Realizing development, Conservation, protection and sustainable utilization of forestlands and resources

## Sustainable Utilization



- Simplify requirements and streamline harvesting, permitting and transporting procedures for wood and non-wood forestlands resources
- Secure the rights of forestlands managers to access and benefit from the resources found within CBFM tenured areas
- Monitor and assess resource-use activities to ensure sustainability



# Developing livelihood and enterprises in Forestlands



- Enhance existing livelihood support facilities and develop new, appropriate livelihood, if necessary
- Launch and implement food security and self-sufficiency program

# **Developing livelihood and enterprises in Forestlands**

- **Promote economically feasible, culturally acceptable and ecologically sound livelihood activities**
- **Set up or improve systems, mechanisms and technologies on livelihood and enterprises within CBFM tenured areas**
- **Build and strengthen partnerships in production, product development and marketing**

# Support Mechanisms

## Management and Policy

- **Immediately convene the CBFM National Steering Committee to include membership of NGO Coalition Groups and LMPs**
- **Organize or strengthen existing working groups at the regional, provincial, city and municipal levels**

# Support Mechanisms

## Organizational and Institutional Development

- DENR, LGUs and NGOs to respond to the demands of the POs as support groups of CBFM
- Retool and/or build the capabilities
- DENR, LGUs and NGOs to identify respective units responsible on policy support and management

# Support Mechanisms

## Organizational and Institutional Development

- To provide more support to its CENROs
- LGUs to tap devolved DENR personnel and create/ strengthen ENR offices
- NGOs to have critical engagements with government

# Support Mechanisms

- **Research and development**
- **Information and Communication support**
- **Gender and youth development**
- **Incentives and reward system**

# Support Mechanisms

## Resource Generation and Mobilization

- The CBFM Steering Committee, through its working groups, will take the lead in generation of new internal and external assistance for CBFM
  - ❖ Present CBFM as an agenda in various resource institutions, individually or by consortium level like the Philippine Development Forum
  - ❖ Develop savings, financing and credit as well as collateral schemes for CBFM
  - ❖ Institutionalize payment for environmental services or users' fees

# Support Mechanisms

## Resource Generation and Mobilization

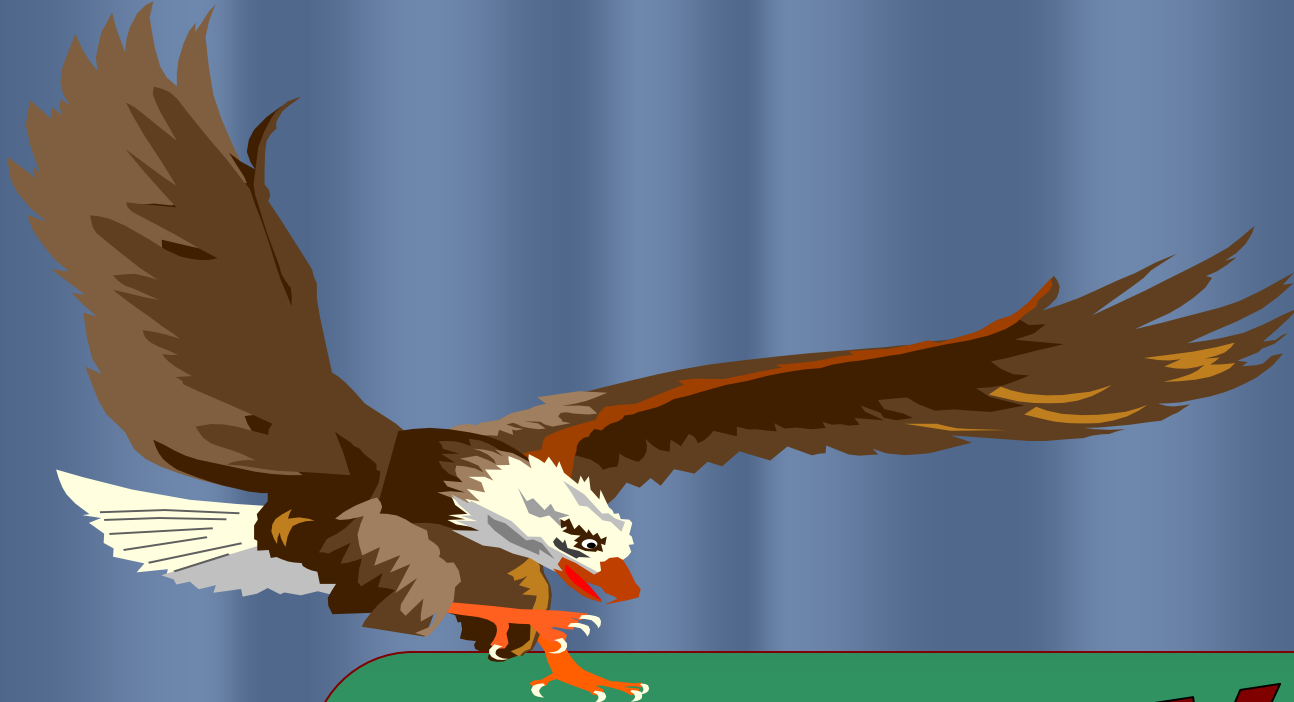
- ❖ Develop ecological tourism in appropriate CBFM areas
- ❖ Lobby for:
  - passage of enabling law for the establishment of CBFM Special Account at the national and local levels
  - increase in DENR's CBFM budget through GAA
  - LGU funds for CBFM through IRA, PES, etc.



# Support Mechanisms

## Monitoring, Assessment and Reporting

- The progress of implementation will be monitored and assessed by internal and external bodies



***Thank You***