

**PRESENTATION GIVEN AT THE TRANSLINKS NATURE,
WEALTH AND POWER WORKSHOP**

QUEZON CITY, PHILIPPINES

JUNE 20 – 21, 2007

HOSTED BY ENTERPRISEWORKS/VITA



This workshop was made possible by the generous support of the American people through the United States Agency for International Development (USAID) under the terms of the TransLinks Cooperative Agreement No.EPP-A-00-06-00014-00 to the Wildlife Conservation Society (WCS). TransLinks is a partnership of WCS, The Earth Institute, Enterprise Works/VITA, Forest Trends and the Land Tenure Center. The contents are the responsibility of the authors and do not necessarily reflect the views of USAID or the United States government.

To create a balance between the welfare of local communities and their environment



Forest Honey Development in Danau Sentarum for Local People Income Generation & their Wetlands Protection

By : Valentinus Heri & Thomas Irawan





DANAU SENTARUM NATIONAL PARK

- ◆ 132,000 ha
- ◆ 23 out of 55 villages produce forest honey
- ◆ Annual forest honey production: 25 tons



To create a balance between the welfare of local communities and their environment

FOREST HONEY IN DANAU SENTARUM



- ◆ A potential resource to increase villagers' income, especially in wet season when income from fishing is low.
- ◆ A good incentive to protect the forest, because wild honeybees could only produce honey if the villagers treat the habitat well.

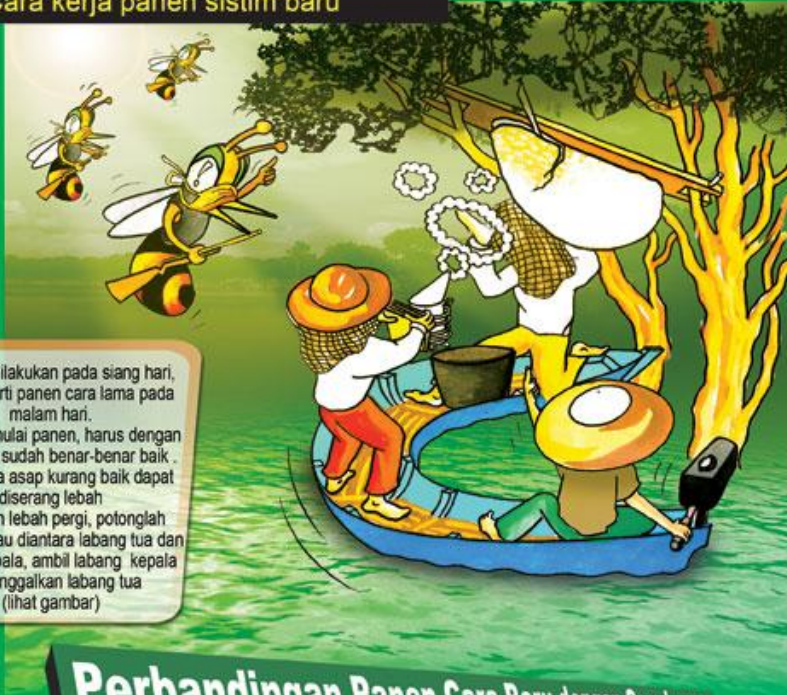




- ◆ To benefit from the potential, the price of forest honey should be high enough and maintained stable. This means that the forest honey produced should be of high quality and well known.



Cara kerja panen sistim baru



- Panen dilakukan pada siang hari, tidak seperti panen cara lama pada malam hari.
- Jika memulai panen, harus dengan asap yang sudah benar-benar baik karena jika asap kurang baik dapat diserang lebah
- Setelah lebah pergi, potonglah dengan pisau diantara labang tua dan labang kepala, ambil labang kepala dan tinggalkan labang tua (lihat gambar)

Perbandingan Panen Cara Baru dengan Cara Lama

Cara Baru (Sistem Sunat)

- Hanya diambil labang kepala saja
- Panen beberapa kali semusim
- Tidak banyak lebah yang mati
- Populasi lebah bertambah
- Peningkatan hasil panen
- Resiko kecelakaan kecil (terjatuh atau terpeleset)
- karena dilakukan siang hari

Cara Lama

- Ambil semua labang
- Panen hanya sekali dalam semusim
- Lebih banyak lebah yang mati
- Berkurangnya populasi lebah
- Tidak ada penambahan hasil panen
- Resiko lebih tinggi (terpeleset) karena dilakukan malam hari

- ◆ The improvement of honey quality started in 1995 when Wetlands International introduced a new technique of honey harvesting to some villagers from Sentarum Lake who attended comparative study in Vietnam.
- ◆ Riak Bumi has carried out the dissemination of the technique since 2000. The results were promising, as concluded by Riak Bumi Social Economic Monitoring in 2003.



- ◆ **Results of the social economic monitoring in 2003 showed that the quality and price increased.**
 - With the increase in quality, the initial price of forest honey equal to that of 1 kg of sugar increased to 4 times 1 kg of sugar or about Rp 20,000/kg.
 - However, the volume produced at this price was only 1.5 tons per year while the total production of honey from Sentarum Lake was close to 25 tons.





◆ Problems:

- Riak Bumi cannot inspect all forest honey produced and assure that the honey is of good quality.
- Riak Bumi also cannot buy all the honey recognized as good quality honey, because Riak bumi does not have enough working capital.



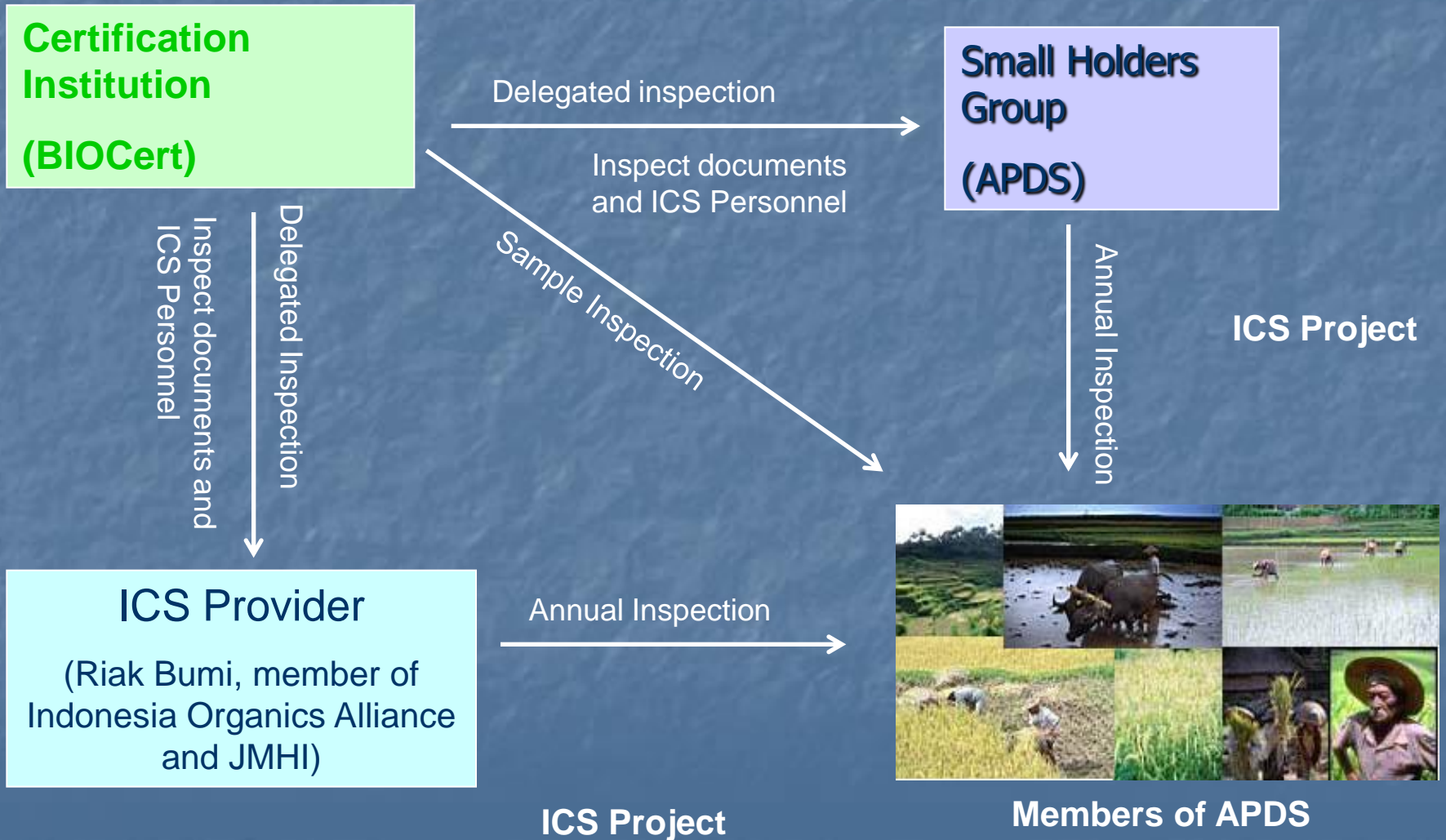
◆ Solution:

- In 2005, through cooperation of Indonesia Forest Honey Network (JMHI) with NTFP EP and through application of Organizing Tool called Internal Control System (ICS) for certification of farmer groups with BIOCert.



What is ICS?

ICS is Management Control System on Quality carried out and documented internally in Small Holders Group of Producers



Organizing *Periau* Using Internal Control System For Certification

Step 1: Preparation

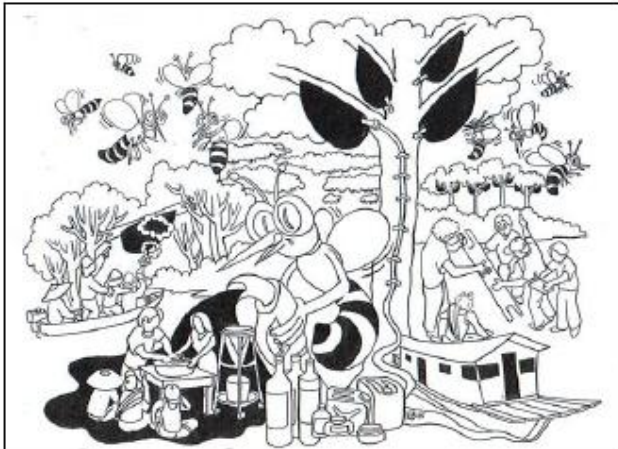
- Assessment: readiness of community
- ICS Training: exploring existing standard in community
- Forming organization embryo: setting up standard and organization mechanism
- Mapping
- Internal Inspector Training

Agreement On Internal Standard

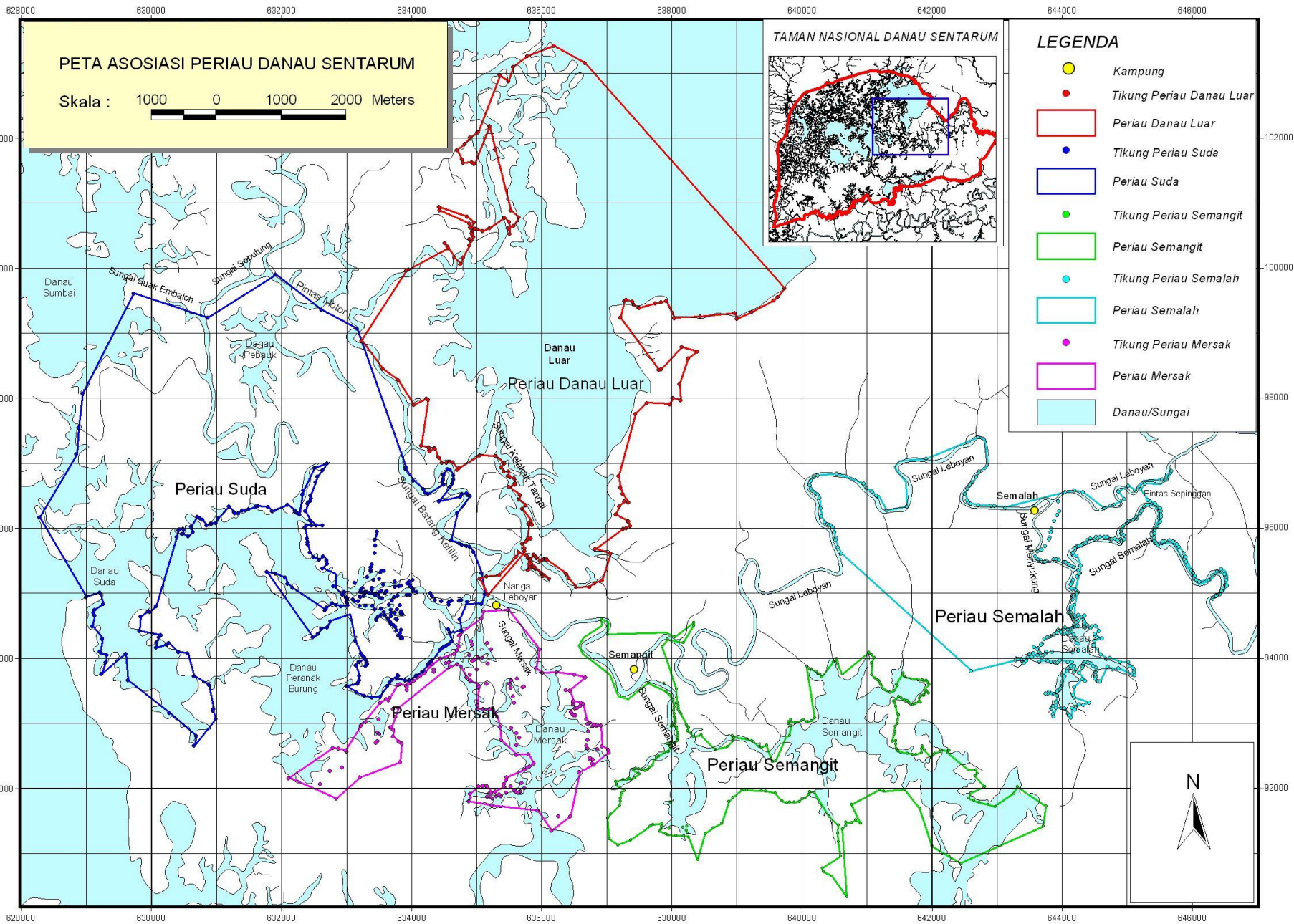
ASOSIASI PERIAU DANAU SENTARUM
DUSUN SEMANGIT DESA NANGA LEBOYAN TAMAN NASIONAL DANAU SENTARUM
KECAMATAN SELIMBAU KABUPATEN KAPUAS HULU
KALIMANTAN BARAT

Kesepakatan Standar Internal Asosiasi Periau Danau Sentarum

Perbaikan Tanggal 24 April 2007



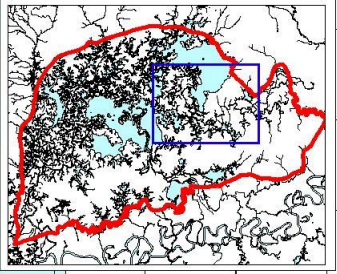
- It's not allowed to take the whole comb, only the honey part.
- All equipment used to extract honey from the comb must be clean.
- It's not allowed to extract honey from the comb by squeezing or pressing.
- Honey must be screened using 100 mesh screen.
- It's not allowed to let honey mixed with any other substances like water, sugar and other chemicals.
- It's not allowed to make fire around area of Bees' habitat.
- It's not allowed to use poison to catch fishes around area of Bees habitat.



PETA ASOSIASI PERIAU DANAU SENTARUM

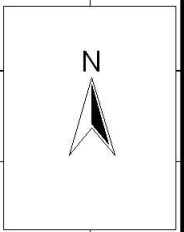
Skala : 1000 0 1000 2000 Meters

TAMAN NASIONAL DANAU SENTARUM



LEGENDA

- Kampung
- Tikung Periau Danau Luar
- Periau Danau Luar
- Tikung Periau Suda
- Periau Suda
- Tikung Periau Semangit
- Periau Semangit
- Tikung Periau Semalah
- Periau Semalah
- Tikung Periau Mersak
- Periau Mersak
- Danau/Sungai

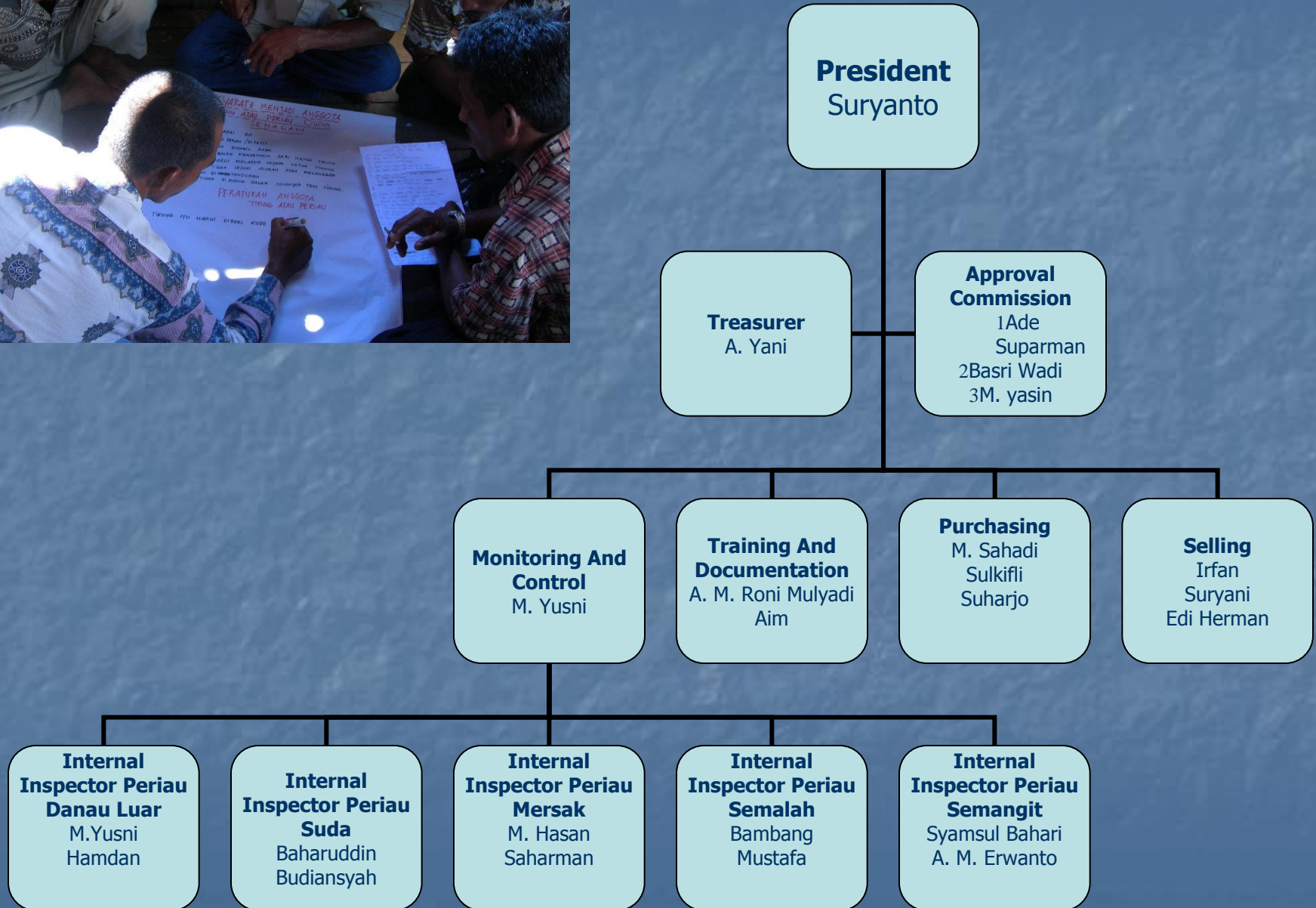


Organizing Periau Using Internal Control System For Certification

Step 2: Organizing

- Forming Sentarum Lake *Periau* Association (APDS) in 3 villages: 5 *periau*, 89 members, 7,683 *tikung* in 7,378 ha
- Information dissemination of the association to 10 other villages
- Training on New Technique of Wild bees Honey Harvesting to 10 other villages
- Practice New Harvesting Technique
- Training on Cooperative Union Management
- Internal Inspection Process
- External Inspection by BIOCert
- Product shipment: 4.3 tons sold at Rp.28,000/kg
- Evaluation
- Certified organic by BIOCert in May 2007

Organization Structure



LESSONS LEARNED

- Cultural Differences: Changes from Emotional Relationship to Functional Relationship.
- Uniform application of “fair trade” requirement in purchasing honey from members appears to be awkward.
- Leadership of the groups is critical in overcoming the differences and tensions.
- The training materials for ICS are also useful for sub village and community business management.
- Application of ICS is useful for combining community business and community organizing, not just for certification.

Discussion

- Governance Issues:
 - Corruption
- Economic Issues:
 - Weak bargaining position of local communities
- Environmental Issues:
 - No local keeper to protect environment



SALAMAT



To create a balance between the welfare of local communities and their environment