

**PRESENTATION GIVEN AT THE TRANSLINKS CEBU
VALUE CHAIN WORKSHOP ENTITLED:**

**“Improving Value Chain Dynamics for Natural Products in
the Furniture, and Gifts and Home Décor and Fashion
Accessories Industry”**

CEBU CITY, PHILIPPINES

JULY 2-3, 2008

**HOSTED BY ENTERPRISEWORKS/VITA AND THE
CEBU FURNITURE INDUSTRIES FOUNDATION**



This workshop was generously supported by the American people through the United States Agency for International Development (USAID) under the terms of the TransLinks Cooperative Agreement No.EPP-A-00-06-00014-00 to the Wildlife Conservation Society (WCS). TransLinks is a partnership of WCS, The Earth Institute, Enterprise Works/VITA, Forest Trends and the Land Tenure Center. The contents are the responsibility of the authors and do not necessarily reflect the views of USAID or the United States government.



Phil. Tropical Forest Conservation Foundation, Inc.

Natural Products Supply Projects and Funding Opportunities

Eric Buduan
Project Officer

TRANSLINKS WORKSHOP

July 2-3, 2008



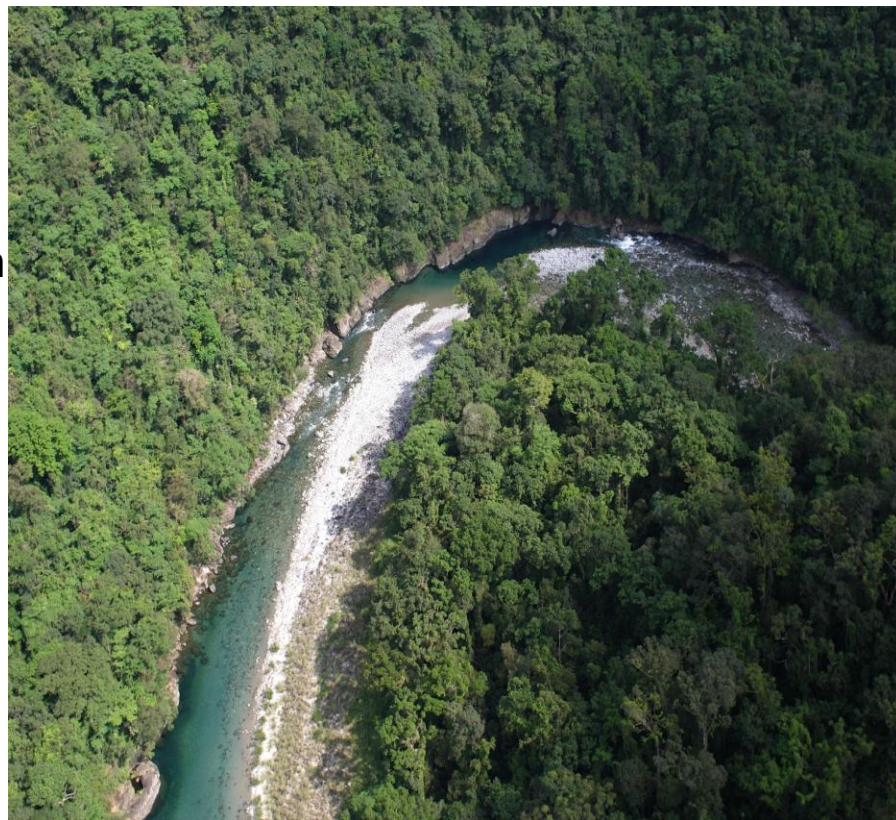
Our Vision.....

We envision lush and biologically diverse Philippine forest that are sustainably managed and equitably accessible to responsible stakeholders, as a collective responsibility for the greater good.



Creation of PTFCF...

- Established under two bilateral agreements signed on Sept. 19, 2002, between the governments of the United States and the Philippines under the US Tropical Forest Conservation Act.
- Leveraged \$5.5 million USG appropriation to treat \$41.5 million in RP-US debt and divert \$8.25 million in peso-denominated interest payments over 14 years, to the Tropical Forest Conservation Fund.
- 9 Trustees (5 NGO representatives, 2 each for Philippine and US governments)



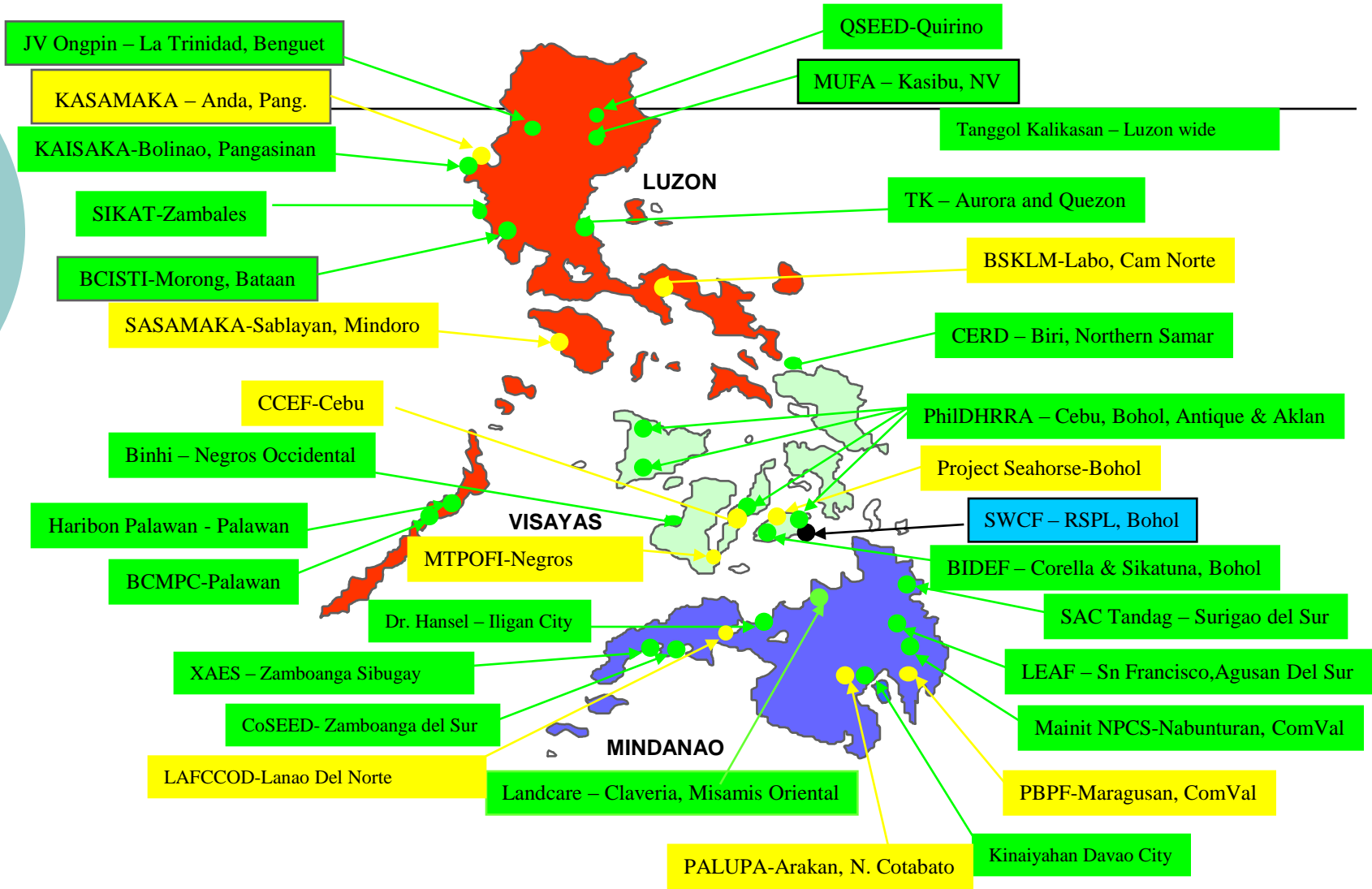


PTFCF Projects

- 38 projects ongoing
- Nation wide in scope
- Multiple scales (national, provincial, barangay)
- Covers 1,230 hectares of mangroves and 148, 217 hectares of dipterocarp forests



PTFCF Supported Projects (2006 - 2007)





Natural Resource initiatives

- Forest restoration or rehabilitation
- Wildling collection and nursery establishment
- Survey, mapping, profiling and delineation of communal forests, watershed areas and protected areas/sanctuaries.





Community Livelihood initiatives

- Household gardening
- Processing of herbal tea, honey and forest fruits
- Agroforestry
- Eco-tourism
- Rice trading
- Nipa and Buri product development and marketing





CL initiatives

- Abaca and coffee production
- “Tinagak” (single strand knotted abaca fiber) processing and marketing
- Aqua-culture based livelihood (fish cages mud crab, oysters)





Governance initiatives

- Watershed mgt/land-use plan preparation
- Delineation of protected areas, watersheds and ancestral domain claims
- Advocacy, awareness-building, information campaigns, mobilization and organizing
- Law enforcement
- Multi-stakeholder partnership for forest conservation





Governance initiatives

- Inventory of mangroves and FLAs
- Cancellation of tax declaration of abandoned fishponds and subject to mangrove planting.
- Application for co-management
- CRMF formulation



Eligible Activities



The establishment, restoration, protection, and maintenance of parks, protected areas and reserves.

Training programs to increase the scientific, technical, and managerial capacities of organizations involved in conservation efforts.

The development of scientifically sound systems of natural resource management, including land and ecosystem management practices.

Development and support of the livelihoods of individuals living in or near a tropical forest in a manner consistent with protecting that forest.

Research and identification of medicinal uses of tropical forest plant life to treat human diseases, illnesses, and health concerns.

Restoration, protection, or sustainable use of diverse animal and plant species.

Modes of Support

- Solicitation of Area Proposals
- Partnerships
- Small grants
- PTFCF initiative
- Direct engagement



PTFCF Programs

- Nursery establishment and development
- Environmental Defense



PTFCF Program



- Overall thematic focus on **dipterocarp forests** and **coastal or mangrove forests**.
- No specific geographic areas have been chosen; focused on **key biodiversity areas**.
- Proposed activities should have a **direct link** to or have an **impact on forest conservation**.



Eligible project holders

- Civil society organizations (NGOs & POs) engaged in forest conservation
- Private academic institutions
- Individuals (for short-term, research projects)

We cannot support government agencies, local government units, instrumentalities, and state universities **unless under exceptional circumstances.**



Grant Considerations

- Capacity building, livelihood and research on medicinal uses are crosscutting components
- PTFCF prefers the use of endemic and indigenous species.
- Proposed livelihood activities should contribute to forest conservation
- Multi-year grants are given, renewable on a yearly basis.
- No more than 2 concurrent grants to one grantee except on the basis of a PTFCF initiative.



Characteristics of a Strong Proposal

- Promotes forest conservation (including community enterprises)
- Reflects local consultative processes
- Identifies specific activities, partners, expected results and implementation mechanisms
- Focused on addressing key threats rather than a “shot gun” approach
- Technically feasible
- Builds human and institutional capacity
- Can be implemented within 3-4 years



Steps in Proposal Evaluation

Step 1: Submit concept proposal

Step 2: Concept evaluation

Step 3: Full proposal development

Step 4: Agreement negotiation and signing

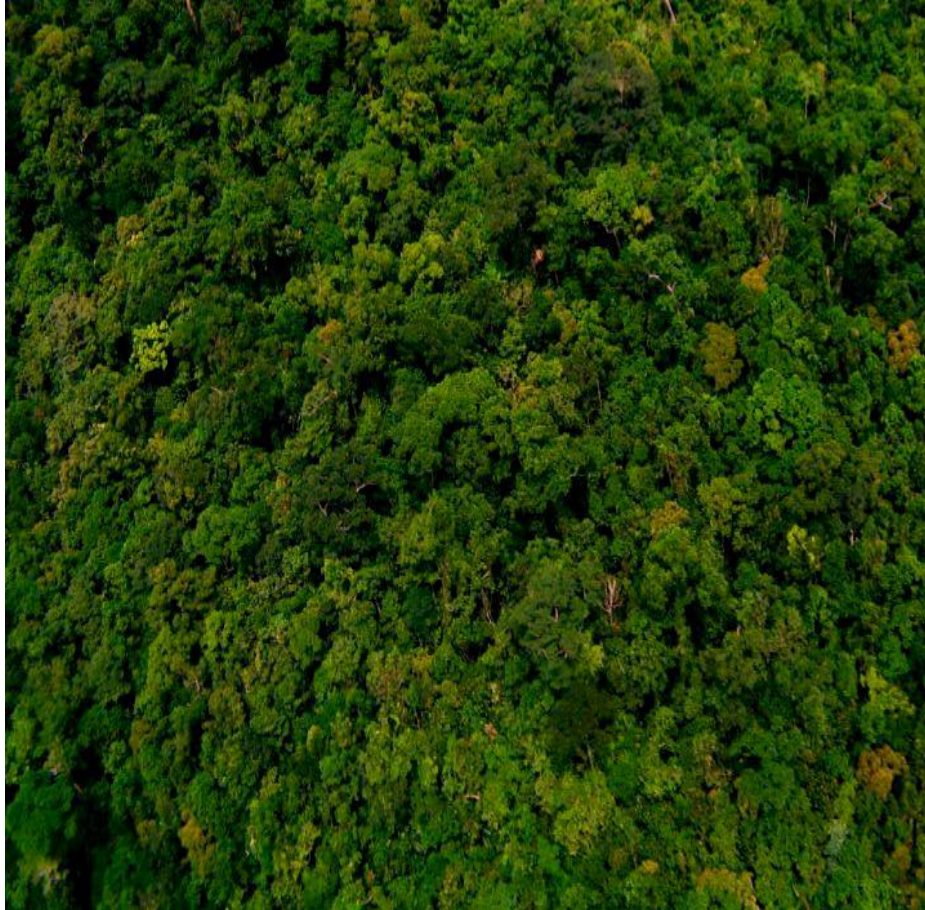
Step 5: Project implementation



Concept Evaluation Criteria

- Direct impact on forest conservation;
- Sustainability of action
- Stakeholder engagement;
- Impact on identified critical or priority areas and species;
- Consistency/coherence of objectives, methods and outcome.

THANK YOU!!!



Philippine Tropical Forest
Conservation Foundation
Unit 714 Manila Bank
Building
Ayala Avenue, Makati City
(02) 864 0287
(02) 891 0595
admin@ptfcf.org
www.ptfcf.org