

Carbon as a Sustainable Finance Opportunity for Indigenous Territory Management

Rob Wallace & Lilian Painter,
Greater Madidi-Tambopata
Landscape, Bolivia & Peru



TRANS LINKS



TRANS LINKS



TRANS LINKS



TRANS LINKS



TRANS LINKS

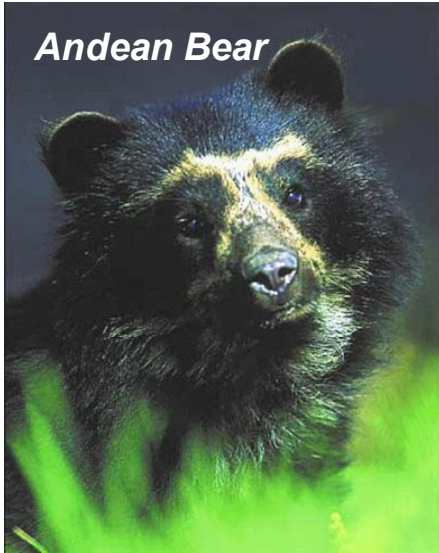


**3.7% of all the
worlds
vertebrates**

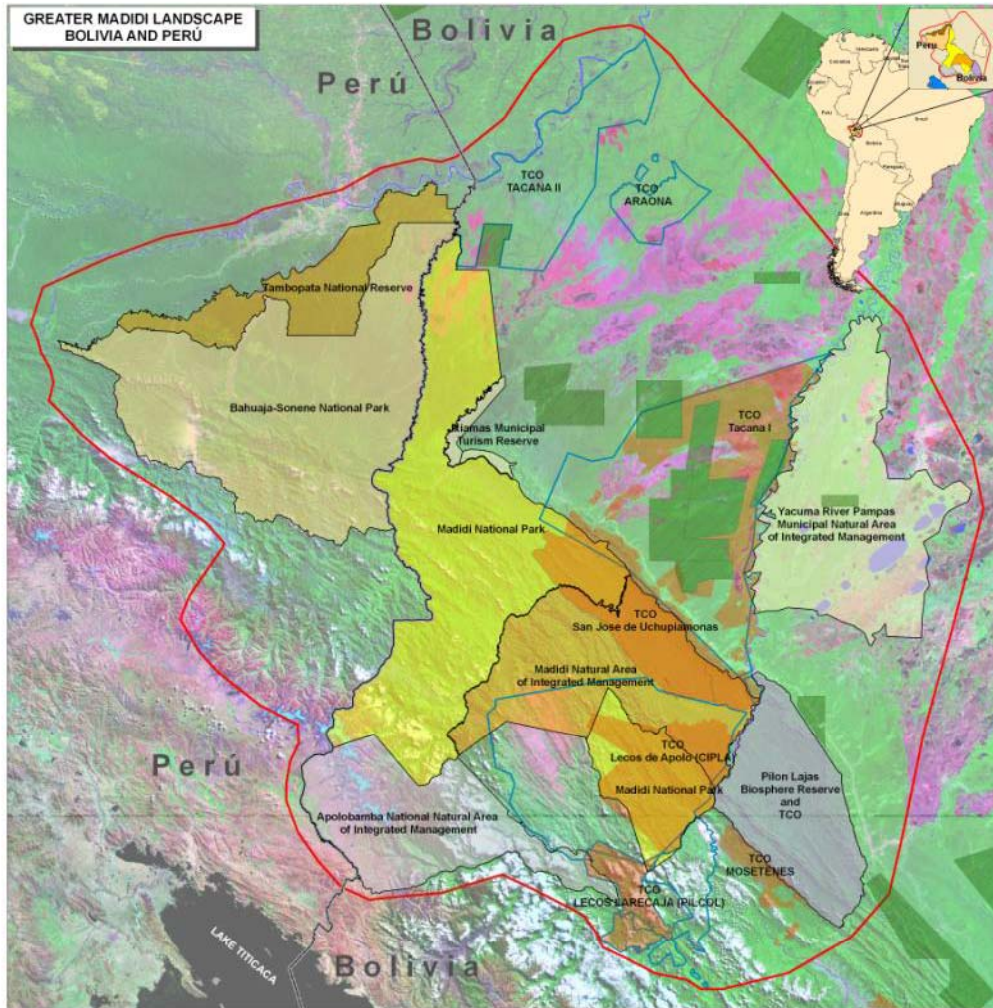
**In 0.0037% of the
planets surface**



Landscape Species in the Greater Madidi Landscape



TRANS LINKS



Binational
landscape

10.9 million
hectares

Size of
Louisiana or
Cuba

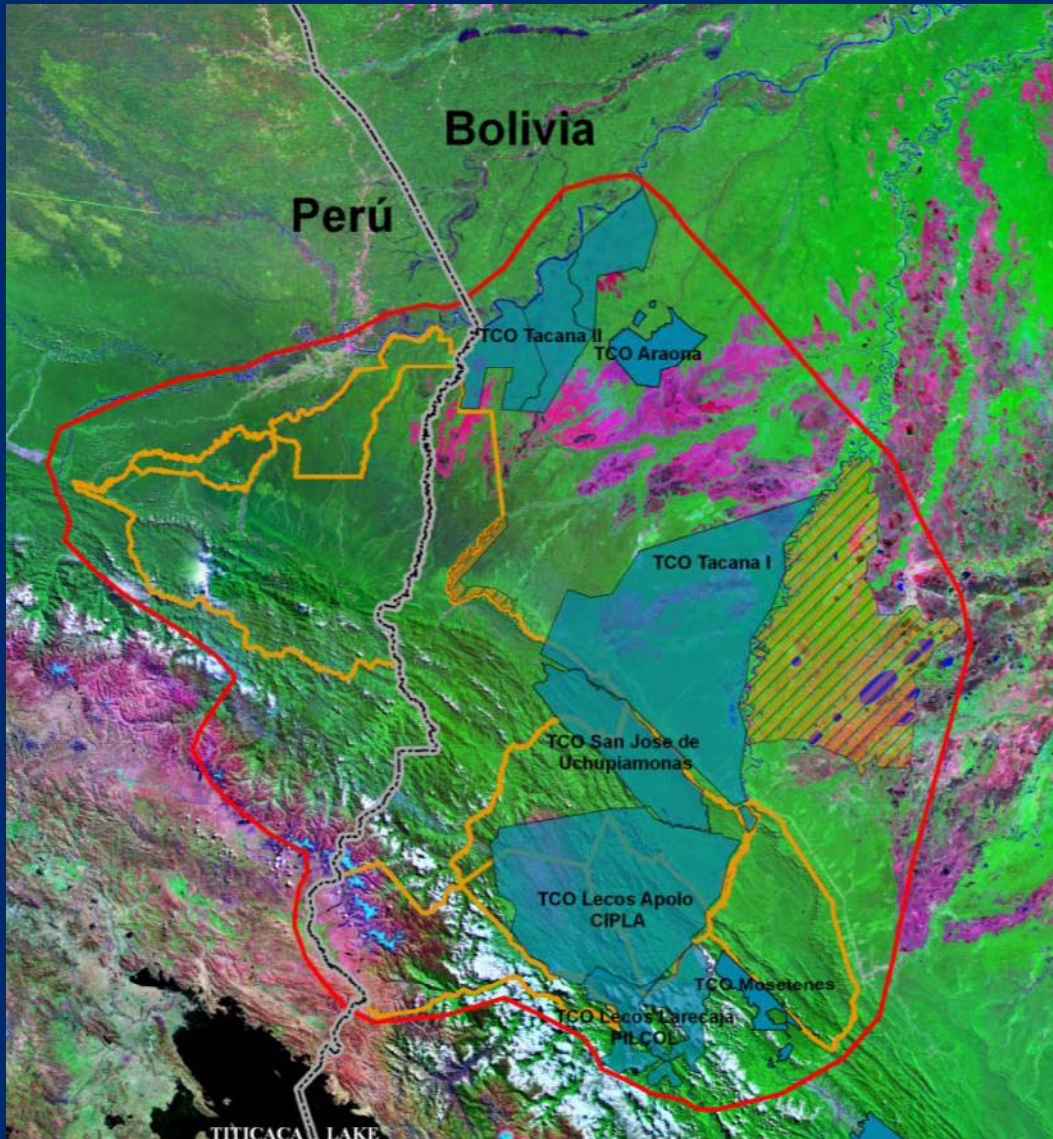
4.15 million
hectares in
continuous
national parks



Intervention Types

- Territorial Planning and Management
- Natural Resource Management
- Strengthening of Key Institutions
- Research and Monitoring
- Integrated Landscape Plan

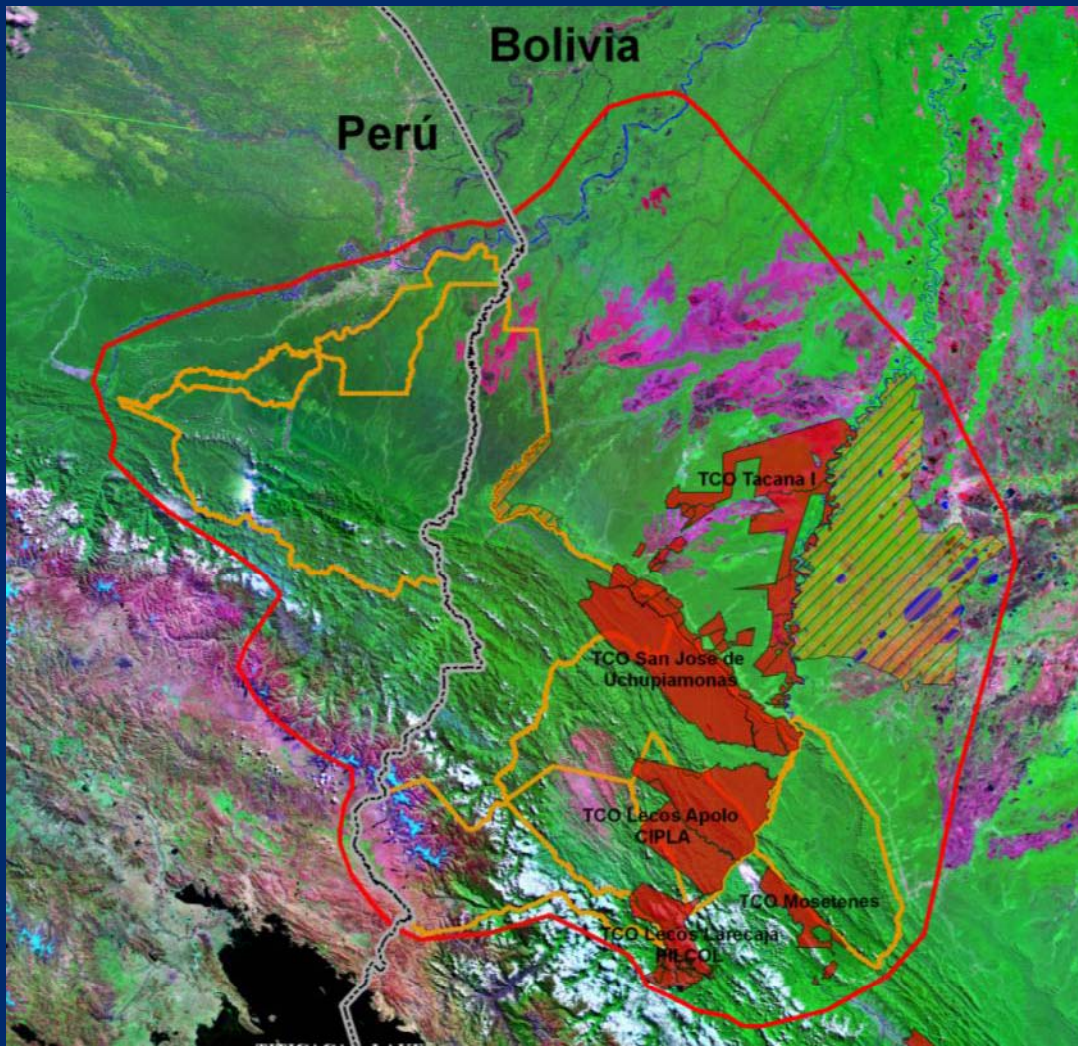




Indigenous Territorial Demands 1999



USAID
FROM THE AMERICAN PEOPLE



Formally Titled Indigenous Territories 2008

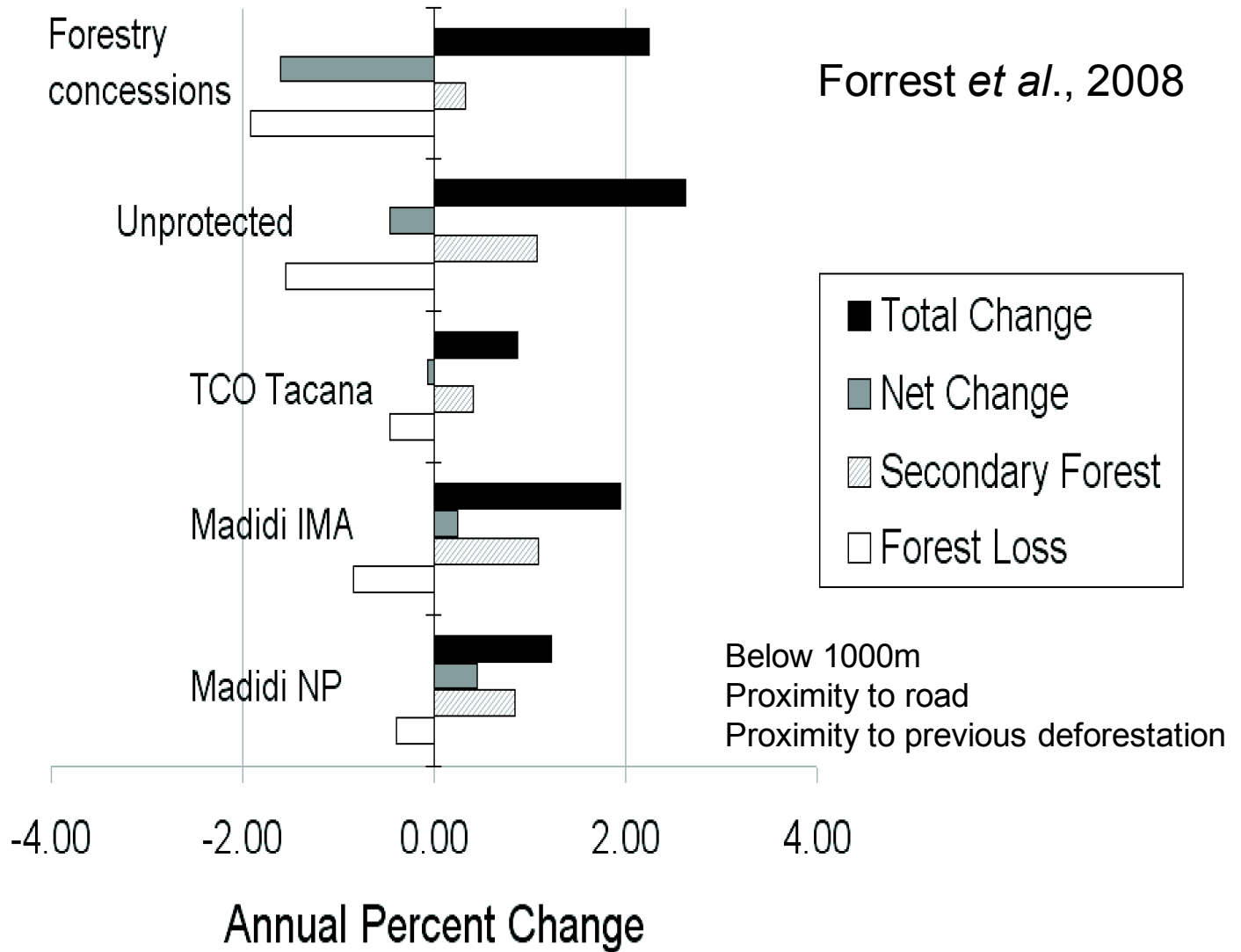


Natural Resource Management & Territory Management

Approximately \$250,000 per year over last eight years



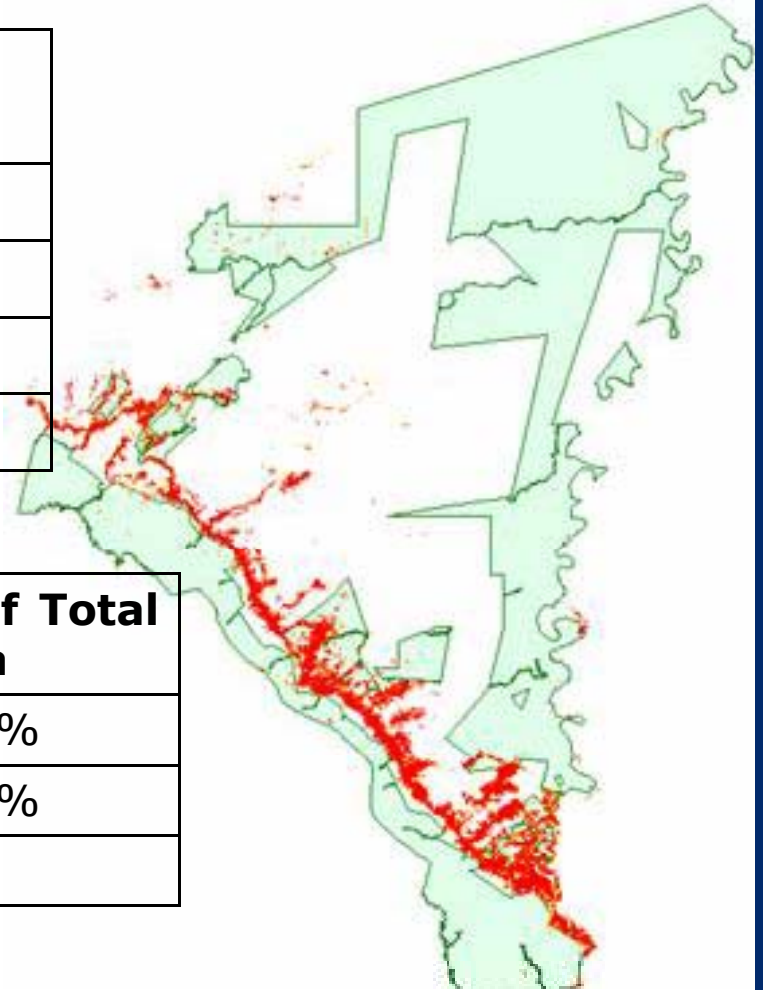
Jurisdiction



TRANSLINKS

Period	Deforestation Has/year
2001 - 2005	369.38
2005 - 2007	195.3
2001 - 2007	311.35
Mean:	292.01

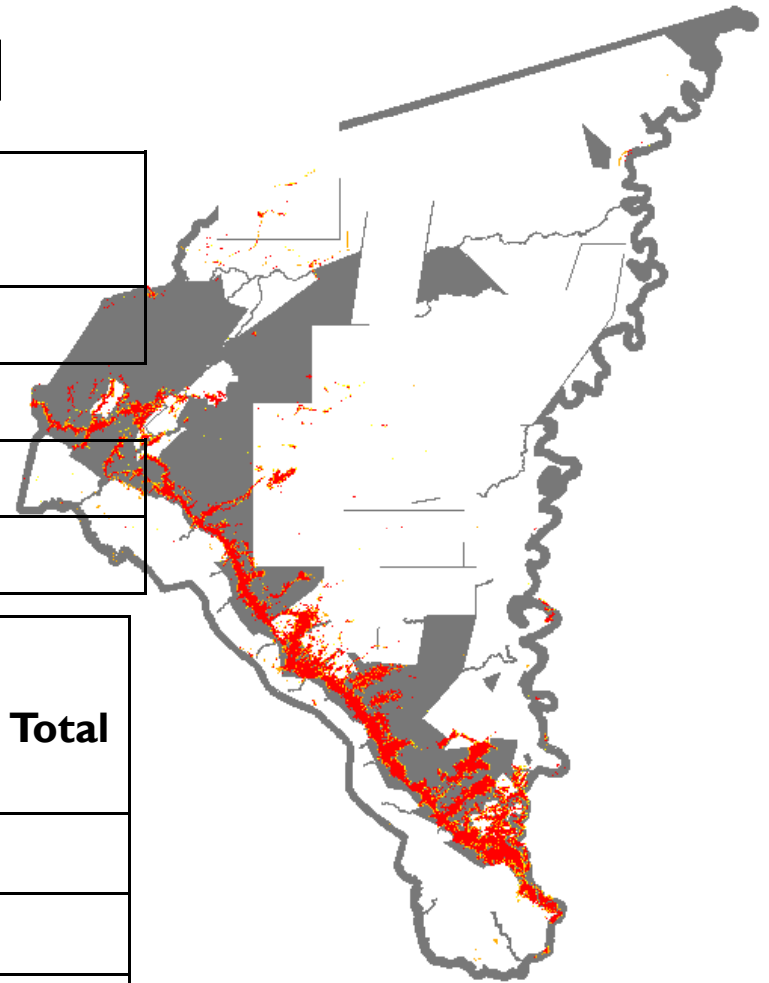
Year	Deforestation Has	% of Total Area
2001	5565.96	1.50%
2005	7043.49	1.89%
2007	7434.09	2%



Surrounding Land

Period	Deforestation Has/year
2001 - 2005	1427,8
2005 - 2007	1248,84
2001 - 2007	1368,15
Mean:	1348,26

Year	Deforestation Has	% of Total Area
2001	20522,79	7,74%
2005	26234,01	9,89%
2007	28731,69	10,84%



USAID
FROM THE AMERICAN PEOPLE

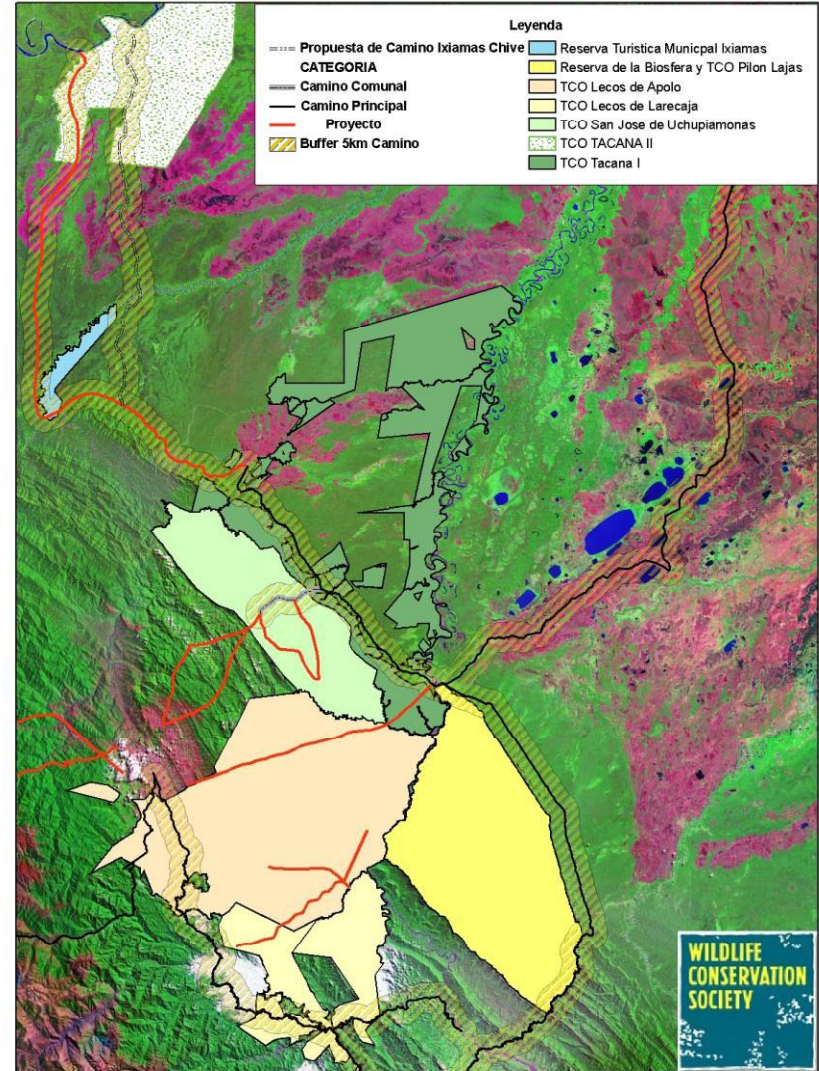
Basic Carbon Estimates

- Rough & conservative estimate of 210 tons of carbon per hectare – based on more than 125 vegetation plots in the region and applied standard equations (roughly 60 tons per hectare lost if converted to agriculture.....)
- Deforestation expected to markedly increase with imminent road paving, improvement and connection associated with planned colonization
- Forest management is also a possibility in the TCO Takana



From road to nowhere to road to everywhere

- Up to 45,000 hectares of TCO within 5 km either side of road estimated to be lost over the next twenty years without adequate management



How to ensure the promise?

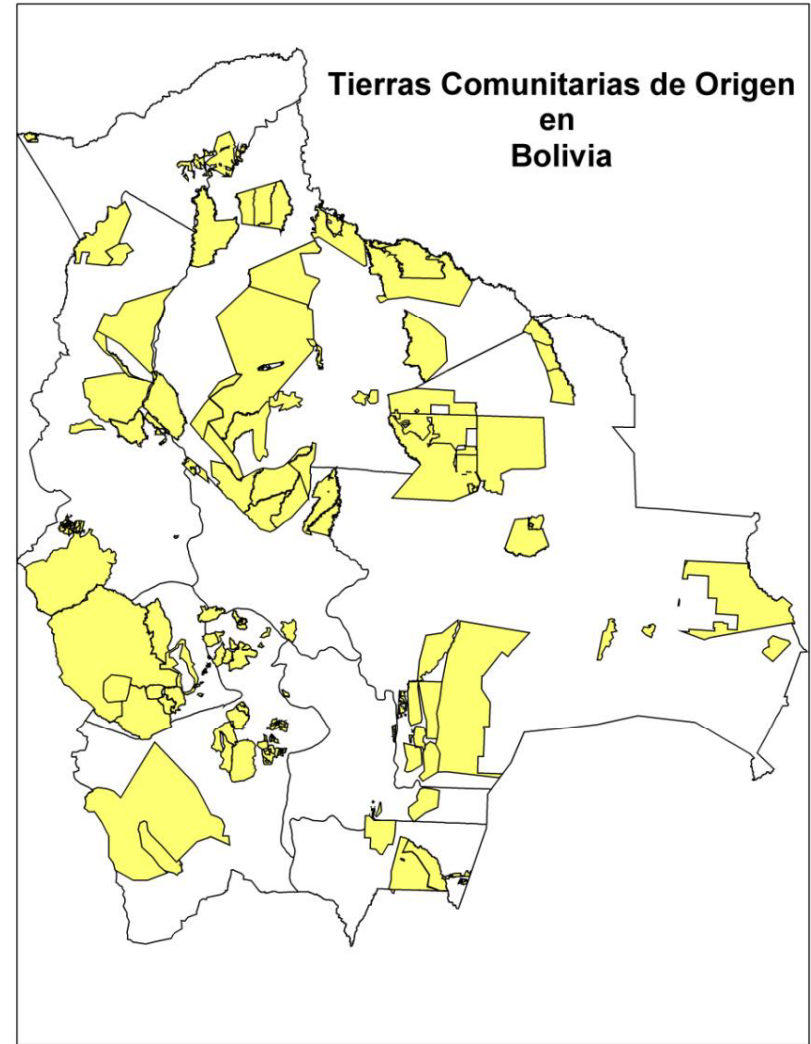
= Benefit Distribution?

- Most managed by CIPTA in Trust Fund for Indigenous Territory Management – project activities (NRM, Institutional Strengthening, Monitoring, Control & Vigilance)
- Payments to individual Takana families
- How much to government? And if so to what levels? National, Regional and Local levels
- Can some of this be tied to control and vigilance activities too?
- Might CIPTA use some \$\$ to help co-manage Madidi?



Model Applicability

- Over 30% of Bolivian Territory in Indigenous Territories
- All under at least some pressure from deforestation
- Also applicable in other parts of the Amazon



Coordination with Bolivian Government

- WCS has been invited to form a part of the REDD Technical Committee by the Clean Development Office of the Development Planning Ministry, Viceministry of Territorial and Environmental Planning, National Program of Climate Change
- WCS has met on two occasions with Gisella Ulloa Coordinator of the Clean Development Office and presented our vision that indigenous people should participate through the implementation of integral territorial management plans in their lands- covering over 30% of the Bolivian territory
- CIDOB participates on the Technical Committee of the REDD and has presented the same vision and the Takana proposal will be the first “pilot” initiative for CIDOB and Lecos Larecaja want to be the second



TRANSLINKS



Thanks

Madidi, Pilon Lajas, Apolobamba, SERNAP, DGBAP, Bahuaja-Sonene, Tambopata, INRENA

This presentation is made possible by the generous support of the American people through the United States Agency for International Development (USAID), under the terms of Cooperative Agreements Nos. LAG-A-00-99-00047-00 & RLA-A-00-06-00072-00. The contents are the responsibility of WCS and do not necessarily reflect the views of USAID or the United States Government

Moore Foundation, MacArthur Foundation, Blue Moon Fund, Disney Wildlife Conservation Fund, Critical Ecosystem Partnership Fund, Woodland Park Zoo, Margot Marsh Biodiversity Foundation, Primate Conservation Inc., Conservation International Primate Action Fund, Philadelphia Zoo, ESRI

Photos: Eleanor Briggs, Pere Comas, Lidia Kolter, Mileniusz Spanowicz, Yves Thonnerieux, Rob Wallace, WCS

